



# MONTHLY MEMBERSHIP PROGRESS REPORT

District 29 I

Results as of: 11/30/2017

GMT: CINDY GREGG

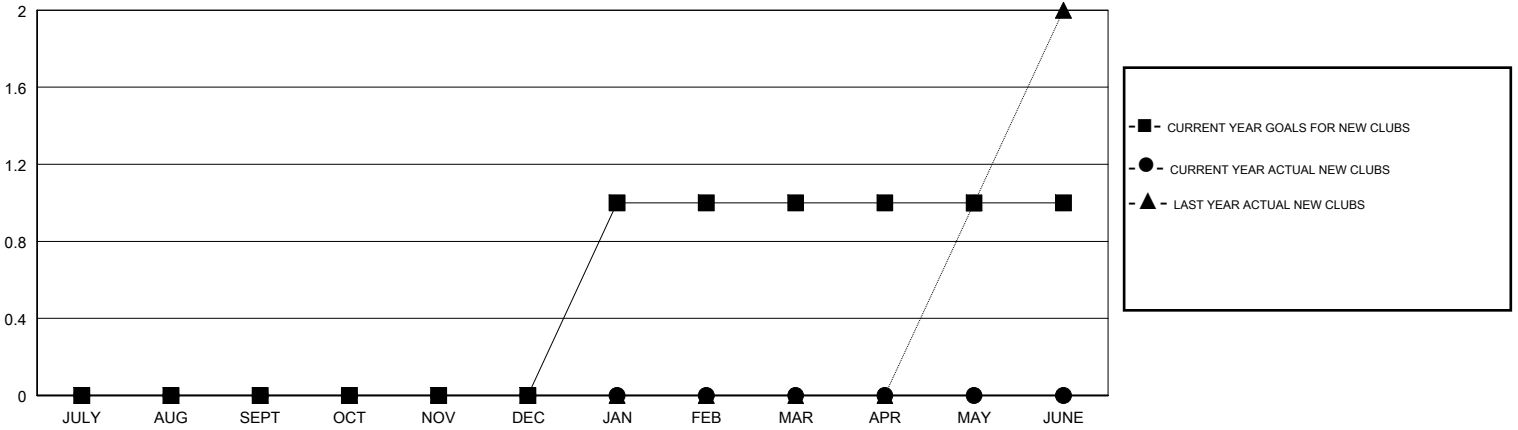
LOCATION WEST VIRGINIA

GMT CA

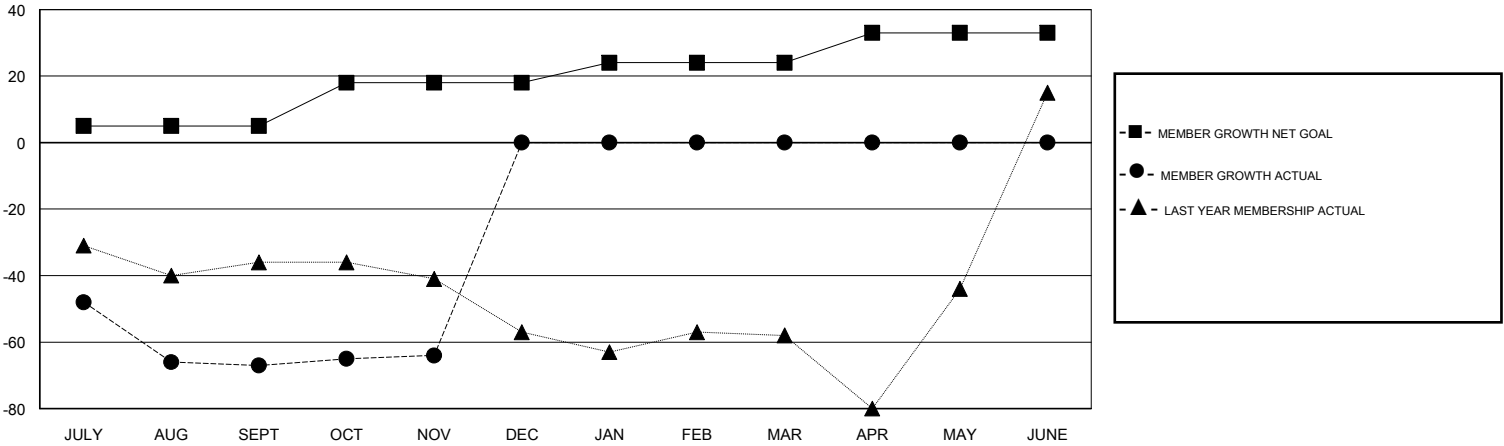
Clubs			
RESULTS FOR 2017-2018			
QUARTER	NEW CLUB GOAL	NEW CLUBS	DROPPED CLUBS
JULY/AUG/SEPT	0	0	0
OCT/NOV/DEC	0	0	0
JAN/FEB/MAR	1	0	0
APR/MAY/JUNE	0	0	0

Members			
RESULTS FOR 2017-2018			
QUARTER	MEMBER GROWTH NET GOAL	MEMBER GROWTH ACTUAL	DROPPED MEMBERS ACTUAL (including transfers)
JULY/AUG/SEPT	5	20	83
OCT/NOV/DEC	13	26	19
JAN/FEB/MAR	6	0	0
APR/MAY/JUNE	9	0	0

GOALS AND ACTUAL NEW CLUBS CUMULATIVE



GOALS AND ACTUAL MEMBERS CUMULATIVE



DROPPED CLUBS: 0
------------------

19 CLUBS OF 55 ADDED 1 OR MORE NEW MEMBERS

GENDER DISTRIBUTION	
MALE	1,031 (65.34%)
FEMALE	547 (34.66%)
Women Percentage Fiscal Year Goal: 35%	

DROPPED MEMBERS	
DECEASED	15
CLUB CANCELLED	0
OTHER	87
<b>TOTAL</b>	<b>102</b>

[CLICK HERE FOR CUMULATIVE MEMBERSHIP DATA](#)

TOTAL FAMILY UNIT MEMBERS	467
FAMILY MEMBERS PAYING HALF DUES	237